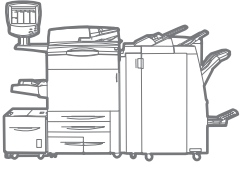


WorkCentre®
7755 / 7765 / 7775
A3
Colour
Multifunction System



Xerox® WorkCentre®
7755 / 7765 / 7775
Multifunction System
Exceptionally efficient.
Extra secure.
Extremely easy.



Productive, easier to use and secure

The Xerox WorkCentre 7755 / 7765 / 7775 colour multifunction system thrives in document-intensive office environments where the workloads are demanding and security's a must, and where ease-of-use and ease-of-management truly matter.



Performance to increase productivity

Why crowd the office with multiple devices when one can meet all your needs? The WorkCentre 7755 / 7765 / 7775 has the features you use everyday and the power to be true multitaskers.

- **Up to 75 ppm copy and print speeds.** Enhance office productivity with full colour at a speedy 50 ppm!
- **Fast scanning up to 80 ppm** (50 ppm in colour). Your department can swiftly scan, retrieve, electronically store and distribute documents.
- **Multiple users can simultaneously perform different tasks at the device.** Scan, copy, print, transmit faxes and manage the queue while other jobs are running— a helpful feature in maximising business efficiency.
- **Flexible finishing options are available.** Short production runs can be efficiently handled inhouse, saving time and money.

Workflows that make your work easier

Your processes simplified

- Standard OCR (optical character recognition) allows Scan to searchable PDF format for universal compatibility and easy archiving, organising, searching and sharing.
- Scan to Mailbox stores files on the device's hard drive, where they can be printed and deleted or retrieved at a user's desktop.
- Scan to Home allows scanning to preassigned "home" destinations – such as an email address, network folder or FTP directory – for fast document routing at the push of a button.
- Improved scan export compression (MRC, JBIG2) provides significantly faster transmission speeds and reduces network load.

Xerox Extensible Interface Platform™ is software inside the WorkCentre 7755 / 7765 / 7775 multifunction system that enables personalised solutions you can access right from the device touch screen. Engineered to easily adapt to the needs of any industry, these solutions can leverage your existing databases and meet your specific business challenges.

Possibilities include:

Healthcare

Streamline document routing, expedite collaboration. Create personalised scan menus, retrieve scanned files, and route documents to pre-assigned recipients, such as insurance companies and other practitioners, quickly and easily – all from your multifunction system.

Legal

Maintain confidentiality, save time. Legal professionals can quickly and securely scan documents to custom network locations – such as case-specific or attorney-specific folders – with access and routing options based on their user ID.

Education

Focus on teaching, not paperwork. Teachers can use a customised touch-screen interface to access course-specific documents stored on the network – and quickly print them – directly from the multifunction system.

IT

Ease of integration. Managing applications across a fleet of devices is easy. Make updates at the server level and those changes become live on all EIP-devices on the network, eliminating the need to load software on each individual device.





Easier from end to end

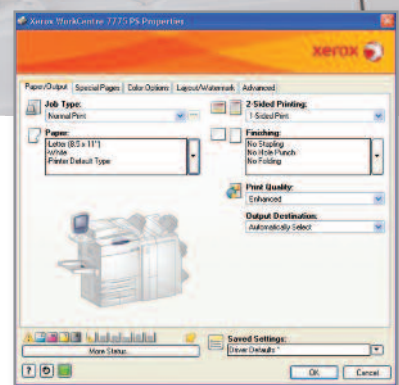
Running complex jobs doesn't have to be complicated. From the large touchscreen interface and bi-directional print drivers to simple job-based reporting and accounting tools, the WorkCentre 7755 / 7765 / 7775 is designed with reliability and ease of use in mind.

Easy to use

- **User intervention is kept to a minimum.** Two black toner cartridges means toner lasts longer and can be replaced on the fly. SMart Kit™ technology ensures the device is kept up and running.
- **New, re-engineered colour touch screen interface.** Bright, intuitive icons and easy access to all major functions directly from the home screen.
- **Green print features.** Automatic environmentally-friendly print settings allow for improved productivity, cost savings and environmental sustainability. Print driver defaults can be set to include two-sided printing, proof print, no banner page, recycled paper and draft mode.

Easy to manage

- **Manage every device.** Using Xerox CentreWare® Web, IT administrators can easily install, configure, manage, monitor and report on printers and multifunction devices across the network, regardless of manufacturer.
- **Smart eSolutions.** Simplify ownership with hands-free, hassle-free, secure administration of Xerox devices for automatic meter reads.
- **Xerox Standard Accounting.** Monitor not only the pages your office produces, but also who produced them. Manage access and gather data for print, copy, scan and fax output — black and white and colour.
- **Automatic Information Forwarding.** Automatically enables the collection and sending of reports to Xerox for quicker and better service.



Intuitive, bi-directional print drivers provide easy access to all output functions.

Security at all points

How much would it cost your business if the security of critical, sensitive information became compromised? Are you at risk?



Safeguard your information

The WorkCentre 7755 / 7765 / 7775 incorporates some of the strongest security features in the industry, ensuring that your document production workflow, often overlooked in security checks, is well-protected.

Security to the highest degree

We built in the latest network security features, such as tight integration with email security systems, embedded fax functionality which isolates the fax system from other network functions, and detailed remote management and alerts through tools such as CentreWare Web.

IT managers will appreciate the ability to create an authentication system that not only restricts access to scanning, email and output from the device, but also provides an audit trail of accountability for all device users.

Advanced security features:

- **Network Authentication.** Restricts access to scan, email and network fax features by validating user names and passwords prior to use. With Audit Log capabilities you'll know who sent what and when.
- **Secure Print.** Prevents unauthorised viewing by holding jobs in the queue until a PIN is entered, releasing documents to print. Secure Print job submission utilises IPsec.
- **Image Overwrite.** Eradicates data by overwriting the disk surface with patterns of data.
- **Embedded Fax.** Prevents unauthorised device access via the fax subsystem. There is complete separation of the fax telephone line and the network connection.
- **Device Access Password Protection.** Ensures administrative set-up screen and remote network settings cannot be viewed or altered without authentication.
- **IP Address Restriction (IP Filtering).** Controls communications with specific network clients. Operates in IPv4 and IPv6 environments.
- **Secure Scan.** Transmits files using HTTPS (SSL).
- **Secure Device Administration.** HTTPS is enabled through CentreWare.
- **802.1x Port Based Network Access Control.** Ensures that devices that are connected to the network have the proper authorisation.
- **Secure Access Unified ID System.** Enables users to log-in at the device with their magnetic or proximity ID card for secure access to functions that need to be tracked for accounting or regulatory requirements.

Colour: in-house and under control

Add the impact of colour and take advantage of tools that let you choose when, where and how much colour your business needs.



Colour documents gain readership, make a stronger first impression and increase memory retention and boosts sales.

Colour used strategically

- **Nothing gets noticed like colour.**
2400 x 2400 dpi output resolution with 256 half tones gives your documents unmatched clarity and impact.
- **Emulsion Aggregate High-Grade toner.**
Delivers a professional glossy finish on documents where impact is the key. Trickle Charge Development (a Xerox innovation) maintains high image quality throughout the job.
- **You only pay for colour on pages that use colour.** This makes it more cost-effective to print jobs with mixed colour/black and white documents.
- **Control access to colour.** Reduce costs by allocating colour-page limits by user, department, etc.
- **Built-in reporting functions.** Track all services – print, copy, scan, fax and email, as well as colour printing and copying – making usage decisions easier in the future.

Add a colour server for sophisticated colour control and document management

EFI® Fiery® Network Server

You can count on world-class colour and an easy-to-use workflow with this network server. The Command WorkStation® makes it easy to programme, monitor and manage workflows. Colour-management tools enable precise colour from all applications, platforms and formats. Precise colour matching ensures total colour quality control in the printing workflows of graphic arts professionals. Options include: Impose, Hotfolders/virtual printer, spot-on and Autotrap.



Paper input

- 1** 250-sheet Duplex Automatic Document Feeder quickly processes single- or double-sided originals.
- 2** 250-sheet bypass Tray adjusts for custom sizes up to SRA3.
- 3** Two 500-sheet trays are adjustable up to A3.
- 4** 2,010-sheet A4 tandem tray.
- 5** 2,000-sheet High-Capacity Feeder (optional) can increase total capacity to 5,260 sheets.

Paper output

- 6** Multiple finishing options let you choose the capabilities that are right for individual workgroups.



WorkCentre® 7755 / 7765 / 7775 Quick Facts

- Print up to 75 ppm black and white, 50 ppm colour
- True 2400 x 2400 dpi
- Up to 300,000 pages/month duty cycle
- 5,260-sheet maximum paper capacity
- High impact colour with extensive control and accounting features
- Security features for demanding office environments



Print / Copy / Scan / Fax / Email



SRA3

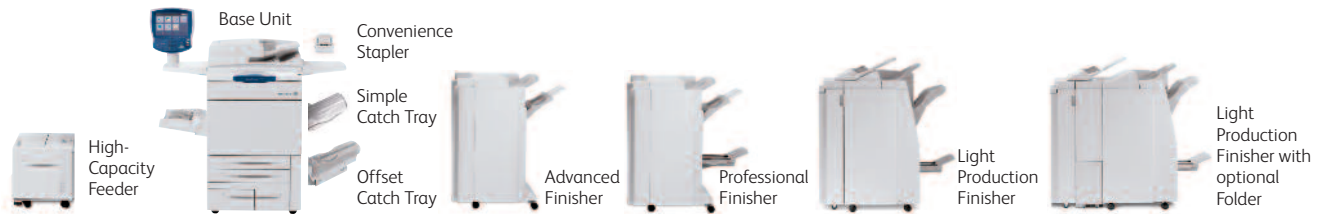


50 ppm colour

WxDxH:
1,574 x 921 x 1,460 mm



WorkCentre® 7755 / 7765 / 7775



	WorkCentre 7755	WorkCentre 7765	WorkCentre 7775
Speed	Up to 55 ppm black and white / 40 ppm colour	Up to 65 ppm black and white / 50 ppm colour	Up to 75 ppm black and white / 50 ppm colour
Duty Cycle	200,000 pages / month	250,000 pages / month	300,000 pages / month
System Memory	2 GB, 80 GB Hard drive		
Paper Handling	Duplex Automatic Document Feeder: 250 sheets Trays 1–2: 500 sheets each; Size: Standard selectable sizes up to A3 Tray 3: 870 sheets; Size: A4 Tray 4: 1,140 sheets; Size: A4 Bypass Tray (Tray 5): 250 sheets; Size: Custom sizes up to SRA3; Total: 3,260 sheets		
Paper input	Standard		
	Optional	High Capacity Feeder: 2,000 sheets; Size: A4; Total: 5,260 sheets	
Paper output	Optional	Simple Catch Tray: 500 sheets; Offset Catch Tray (OCT): 500 sheets Advanced Finisher: 500-sheet top tray, 3,000-sheet stacker tray, 2/4-hole punching and 50-sheet multiposition stapling Professional Finisher with Booklet Maker: 500-sheet top tray, 1,500-sheet stacker tray, 2/4-hole punching, 50-sheet multiposition stapling, saddle-stitch booklet maker, bi-folding Light Production Finisher: 500-sheet top tray, 2,000-sheet stacker tray, 2/4 hole punching, 100-sheet multiposition stapling, saddle-stitch booklet maker, bi-folding, 200-sheet post-process interposer, optional C- and Z-folding Light Production Finisher with Folder: 500-sheet top tray, 2,000-sheet stacker tray, 2/4 hole punching, 100-sheet multiposition stapling, saddle-stitch booklet maker, V, C, Z-folding, 200-sheet post process interposer Convenience Stapler: 50-sheet stapling	
Copy	As fast as 5.5 seconds black and white / 8.9 seconds colour		
First-page-out-time			
Resolution (max)	2400 x 2400 dpi		
Copy features	Automatic two-sided, auto reduction and enlargement (25%–400%), auto paper select, auto tray switching, mixed-sized originals, booklet creation, image quality enhancements, Build Job, book copying / two-sided book copying, auto colour selection, transparencies, booklet creation, multi-up, invert image, covers, annotation and Bates™ stamping (with colour capability), inserts and tab copying, sample set and job storage, heavy-weight paper		
Print	1.33 GHz Freescale Processor / PCL® 5c, PCL 6 emulation, Adobe® PostScript® 3™, PDF v1.6		
Processor / PDL Support			
Connectivity	10/100/1000 Base-TX Ethernet		
Resolution	2400 x 2400 dpi		
Print features	Delay, Sample and Secure Print, simultaneous rip, receive, Programme Ahead, queue-process and transmit, Bi-directional print drivers, Page-level programming, Tab printing, Embedded Web Server for remote control/monitor/setup, Job monitoring at device and at desktop		
Fax	Optional	Walk-up Fax (one-line and two-line options), LAN Fax, Internet Fax, Network Server Fax, Fax Forward to E-mail	
Scan	Optional	Network scanning, Scan to email, Scan to PC Desktop®, Scan to Mailbox, Scan to searchable PDF, PDF/A and XPS®	
Other Options	Foreign Device Interface, Xerox Copier Assistant, Xerox Secure Access Unified ID System, Fiery Network Server, Network Accounting, Work Surface, Unicode Printing		
Security	Fax Security, Secure Print, Audit Log, Secure Workflows, 802.1x, SNMP V3, Network Authentication, Device Access Password Protection, IP Filtering, Disk Image Overwrite		
Accounting	Xerox Standard Accounting (Copy, Print, Scan, Fax, Email), Additional Job Based Accounting Options available		



For more information, visit us at www.xerox.com/office



© 2010 Xerox Corporation. All rights reserved. Xerox®, CentreWare®, WorkCentre®, Scan to PC Desktop®, Walk-Up®, Smart Kit™ and the sphere of connectivity design are trademarks or registered trademarks of Xerox Corporation in the United States and other countries. Adobe® and PostScript® 3™ are trademarks or registered trademarks of Adobe, Inc. XPS® is a register trademark of Microsoft Corporation. PCL® is a registered trademark of Hewlett-Packard. As an ENERGY STAR® partner, Xerox Corporation has determined that these products meet the ENERGY STAR guidelines for energy efficiency. The ENERGY STAR name and logo are registered U.S. trademarks. Terra Choice Environmental Services, Inc. of Canada has verified that this Xerox product conforms to all applicable Environmental Choice EcoLogo requirements for minimised impact to the environment. The information in this brochure is subject to change without notice. 03/10 W77BR-01EC