

Xerox[®] Device Agent, XDA-Lite

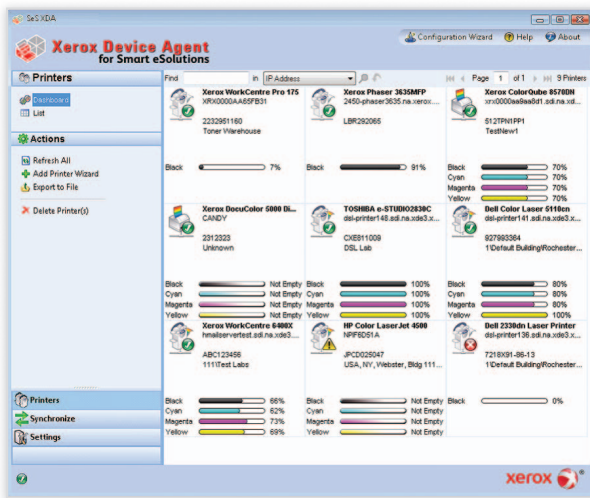
The cutting-edge software that monitors your devices for you.

Introducing XDA-Lite, Xerox's new remote services tool that streamlines automated device monitoring. It enables you to focus on what really matters: running a successful business.

Included with your Service Agreement, this scaled-down version of the full XDA software captures and sends precise device data used for accurate automated billing and supplies replenishment. Designed for maximum simplicity, XDA-Lite is easy to install and provides automated device monitoring.

Key benefits:

- Single solution available to download on a workstation or server
- Intuitive wizard-based installation and set up takes approximately 15 minutes
- Built in auto-reconnection that brings dropped-off devices back online
- Auto-discovery of newly installed devices
- Easy navigation to view and manage all networked devices
- Allows you to configure alert-message pop ups and emails
- Enables you to download device data into a single file extract
- Significantly improved connection reliability
- Works with products already registered via Device Direct method
- Automatic version upgrades available



XDA-Lite provides you with easy features to view and monitor every connected device.

XDA-Lite

Comparison table of technical specifications

Features	SeS*	XDA-Lite	CWW**
General Application Information			
Local Windows® Client	✓	✓	
Locally Installed Web-based server: requires Internet Information Services (IIS) and SQL Server®			✓
Automatic Application Upgrade at Customer Site		✓	
Operates without User Logged On		✓	✓
Supports Operation Disconnected from Server	✓		✓
Online Help		✓	
Device Discovery			
Simple Subnet Discovery	✓	✓	✓
Multi-vendor Device Discovery		✓	✓
Advanced Discovery Subnet Configuration (IP Sweep)		✓	✓
Exceptions/Exclusions List			✓
Advanced Discovery Modes			✓
Direct (Local) Printer Discovery (via Queues) with Single Account Credentials			✓
Active Directory® Printer Discovery			✓
Discover Devices on IP v6 Addresses		✓	✓
Device Monitoring Features			
Device Dashboard View for Less-experienced Users		✓	
Device List View Includes Grouping		✓	✓
Device List View Includes Sorting and Filtering		✓	✓
View Printer Status	✓	✓	✓
View Meters		✓	✓
View Supplies and Alerts		✓	✓
Easy Access to Printer Web Page		✓	✓
Static Built-in Groups		✓	✓
Dynamic Grouping			✓
Group Based Monitoring			✓
Local Pop-up Alerts	✓	✓	
Local E-mail Alerts		✓	✓

* Smart eSolutions Windows client (previous version)

** CentreWare® Web

Features	SeS*	XDA-Lite	CWW**
Remote Management			
Connectivity/Meter/Supplies Submission	✓	✓	✓
Device Status Submission		✓	
Administrator/User Information Submission		✓	
Technologies Supported / Required			
Windows® XP and Vista® (32-bit)	✓	✓	✓
Windows® XP and Vista® (64-bit)		✓	✓
Windows® 2003 (32-bit)	✓	✓	✓
Windows® 2003 (64-bit)		✓	✓
Windows® 2008 (32-bit and 64-bit)		✓	✓
Windows 2000	✓		
Windows® 7		✓	✓
Windows® Server 2008 R2		✓	✓
Minimally Requires Microsoft .Net 2.0	✓		
Minimally Requires Microsoft .Net 3.5		✓	✓
Internet Explorer (Version 6, 7 and 8)			✓
Languages Available			
Dutch		✓	
English	✓	✓	✓
French	✓	✓	✓
German	✓	✓	✓
Italian	✓	✓	✓
Japanese		✓	
Polish		✓	
Portuguese	✓	✓	✓
Russian		✓	
Spanish	✓	✓	✓

To learn more about XDA-Lite and how easy it is to install, visit www.xerox.com/remoteservices

