

## CopySHOP



CopySHOP is an integrated desktop Scan-to-File, Scan-to-Copy and File-to-Print system. Powerful functions in a simple to use application produce fast performance from wide format colour devices.

High speed RIP, with concurrent RIP and print gives unbeatable print engine performance.

- Preview facility allowing 'Soft-Proofing' with real time adjustment

- Easy and efficient
- Full ICC support
- Paper optimisation
- Queue management
- Out of box compatibility
- Rotation and De-Skew
- High quality scaling
- VisualUSER allowing concurrent use by up to 5 people
- Professional photo lab quality
- Preview/Preflight: fast display of file content
- Accurate colour reproduction
- Print, scan, copy, including scan-to-PDF



## Caldera RIP

Xerox Wide Format

### CopyRIP

Printing of raster files: TIFF, TIFF/IT, JPEG, TARGA, GIF, Photoshop PSD, SGI, Alias, Softimage, SUN Raster, XWD, PhotoCD, PBM, PPM, PGM, SpotImage, PCX and BMP. VisualUSER: 5 users.

### CopyRIP-PS

Includes all CopyRIP features, together with fast PostScript Level 3, EPS and PDF 1.4 processing.

### CopyRIP-Tech

Includes all CopyRIP features, together with HPGL processing.

### CopySCAN

Includes all CopyRIP features, together with support for scanning and copying.

### CopySHOP

Includes all CopyRIP PS features, together with HPGL processing and support for Scanning and Copying, with Scan to PDF.

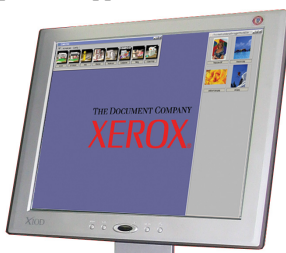
## VisualRIP



The VisualRIP suite of software meets the demanding requirements of productive colour reproduction and image manipulation. VisualRIP brings the speed, power and accuracy of CopySHOP to the production environment.

- Shared printer queues
- Hot folders
- Task automation

- Precise control over rendering techniques
- Image editing and adjustment
- Poster composition
- Nesting
- Tiling
- PDF creation
- Spot colour matching
- Drag & drop interface allows users to work with multiple images
- Support for multiple printers
- Enhanced ICC profile support



### VisualRIP+

Raster Formats: TIFF, TIFF/IT, JPEG, TARGA, GIF, Photoshop PSD, SGI, Alias, Softimage, SUN Raster, XWD, PhotoCD, PBM, PPM, PGM, SpotImage, PCX and BMP. Together with fast PostScript Level 3, EPS and PDF 1.4 processing. VisualUSER: 1 user.

### VisualRIP-Tech

Includes all Raster formats of VisualRIP+ together with HPGL processing.

### VisualFactory

Includes all VisualRIP+ features, together with CostPROOF, SignMARK (eylet positioning system), DeskPDF, two VisualUSERS and three concurrent printers.

### ReproSHOP

Includes all VisualRIP+ features, together with HPGL processing, support for Scanning and Copying, and the ability to drive two concurrent printers.

### Additional Options Available on all Caldera Solutions

HPGL support (where not included), additional VisualUSER licences, additional concurrent printers, DeskCDR/DVD, DeskPDF (PDF Creator)

### DeskCDR/DeskDVD

These modules allow direct creation of CD's or DVD's from the RIP system. This is ideal for saving scanned images for distribution or future re-printing.

### VisualUSER

Visual User is a revolutionary concept which, together with the Caldera Web interface, provides full control of the RIP from your desktop Mac or PC. VisualUSER permits multiple users to access the system simultaneously, and all that is required is a Web browser.

### CostPROOF

The costproof module accurately calculates the cost of a print (media and ink) without printing the file, taking into account the exact quantities of ink required.

### Xerox Optimised Hardware

All RIPs are supplied with Xerox optimised hardware as standard to guarantee optimum performance and reliability in the most demanding situations.

Xerox RIP Hardware Specifications:

- 2.6 GHz CPU
- 1GB Ram
- 80GB HDD
- CD Re-Writer
- 17" TFT Screen



For information on the full Xerox Wide Format product portfolio please visit us at:  
[www.xerox.co.uk](http://www.xerox.co.uk) or call 0870 900 5500